

Section 6

Parts

Introduction This section contains information for use when ordering common repair or replacement parts for LogEtronics LP Plate Processor.

Structural parts such as frame members, tanks and outside panels are not shown as they usually do not require replacement during the normal service life of the processor. If you should need such parts, please contact us, and we will assist you in identifying and obtaining the needed parts.

Ordering Information When ordering parts for the processor give the *part number*, *description* and *quantity required*, and the *model* and *serial number* of the processor for which it is intended.

Non-Illustrated Parts The following parts some are not shown in the illustration, but may be ordered using the indicated part numbers.

Part Description	Part Number
Main Board (Mother Board) (TS-8909-2)	E10-P015-2
Control Panel Board (Key Board) (TS-8904)	E10-P013
Power Supply Transformer	D80-A001
Dryer Heater Protector 1048	M10-A003
Cable 26P 240cm Control Panel to Motherboard	E10-C006
Cable 10P 220cm Motherboard to Feed Sensor	E10-C003
Small Board (TS-9108-2)	E10-P036
Replenish Tank Level Board (TS-9810)	E10-P037

Control Box Parts :

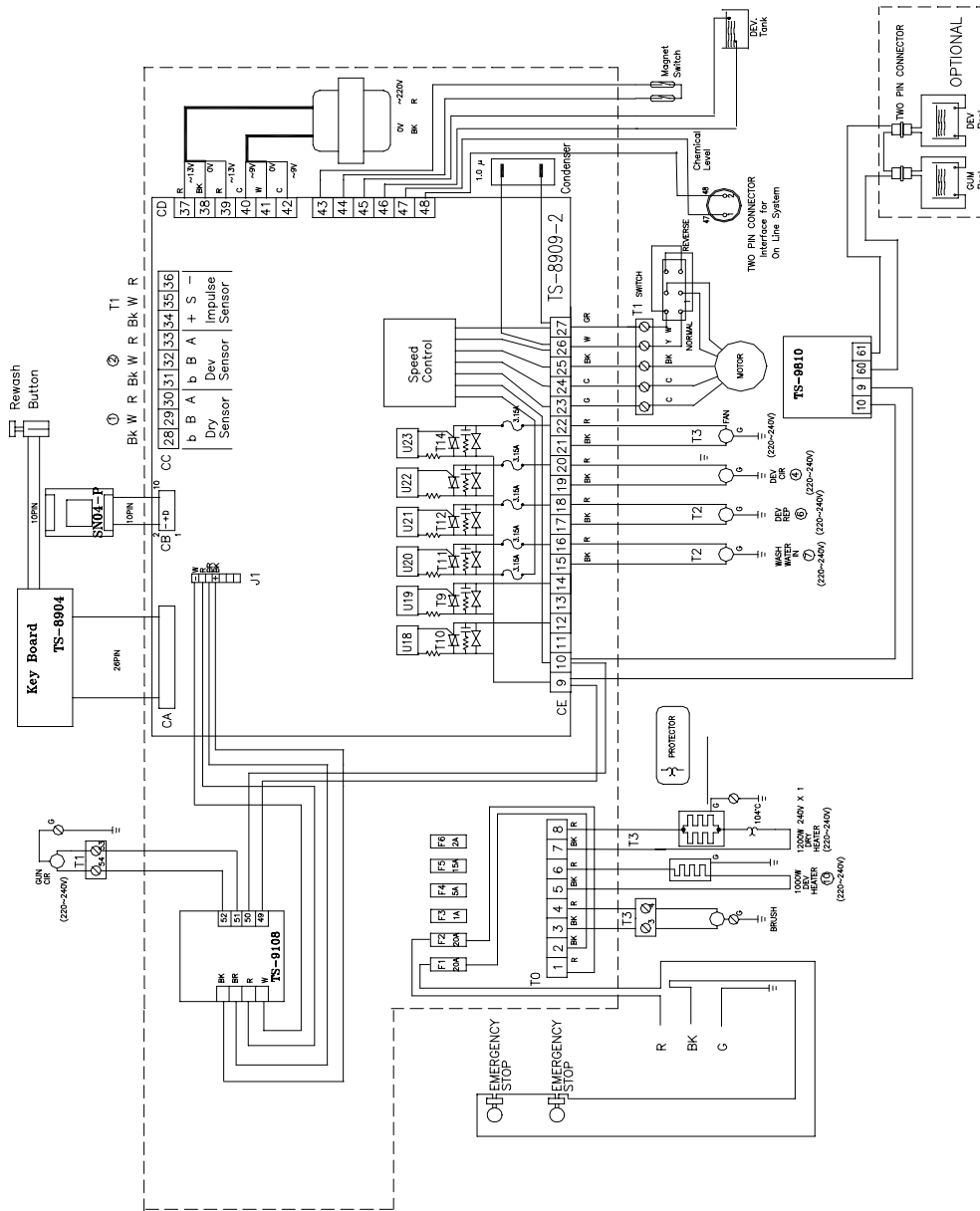


Figure 6-1. Main Control Box Parts Diagram

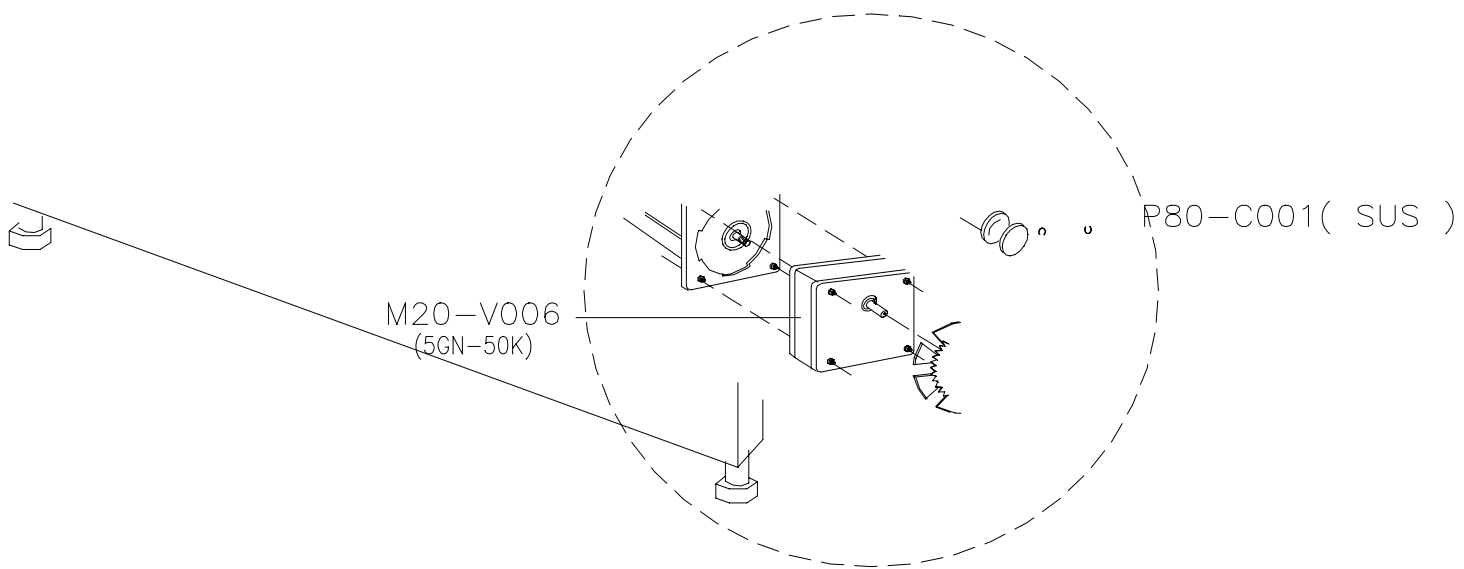


Figure 6-2. Drive Motor Impulse Wheel

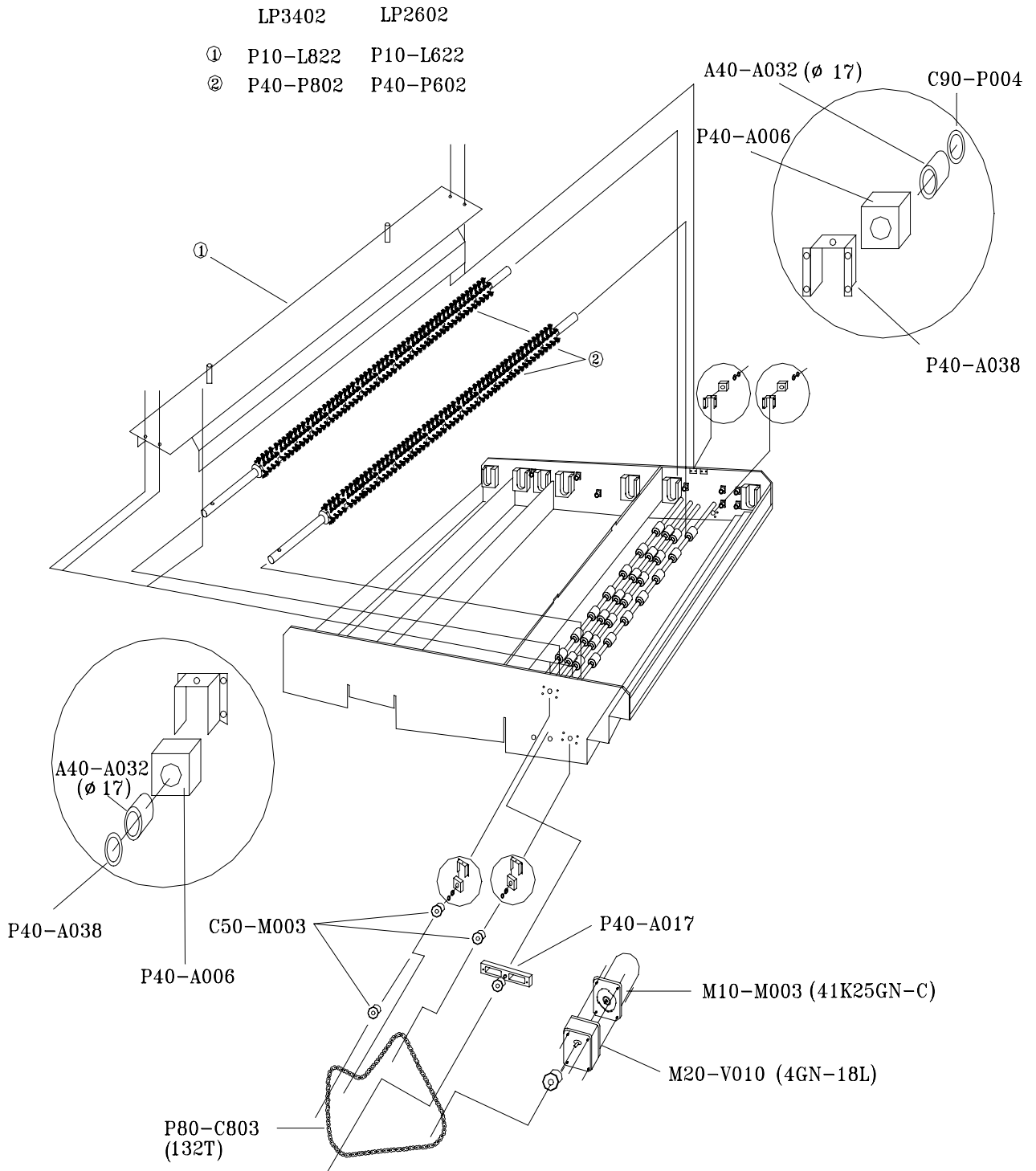
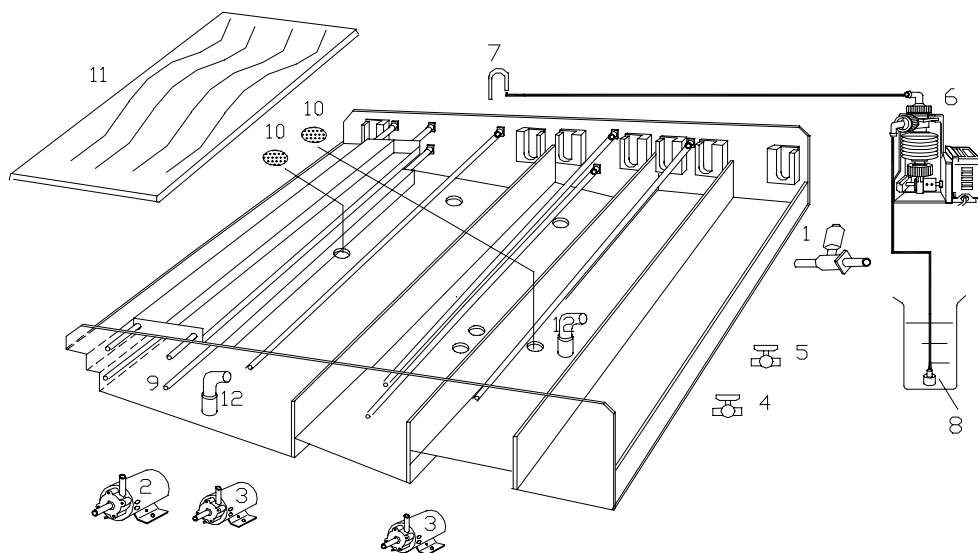


Figure 6-3. Brush



- 1 M40-W002 WATER SOLENOID
- 2 M10-P006 DEV. CIR. PUMP (MD-20)
- 3 M10-P009 GUM. & DEV. CIR. PUMP (MD-10)
- 4 P50-P014 DEV. VALVE
- 5 P50-P014 GUM VALVE
- 6 M10-P011 REPL. PUMP
- 7 C80-G001 REPL. "U" STAINLESS TUBE
- 8 C80-G002 REPL. PUMP SINKER
- 9 P20-B808-1 LP3402 SUS TANK
P20-B608-1 LP2602 SUS TANK
- 10 P30-A804 FILTER NET
- 11 P20-B810 LP3402 SPONGE
P20-B610 LP2602 SPONGE
- 12 A50-A005 RUBBER ELBOW

Figure 6-4. Circulation & Replenishment

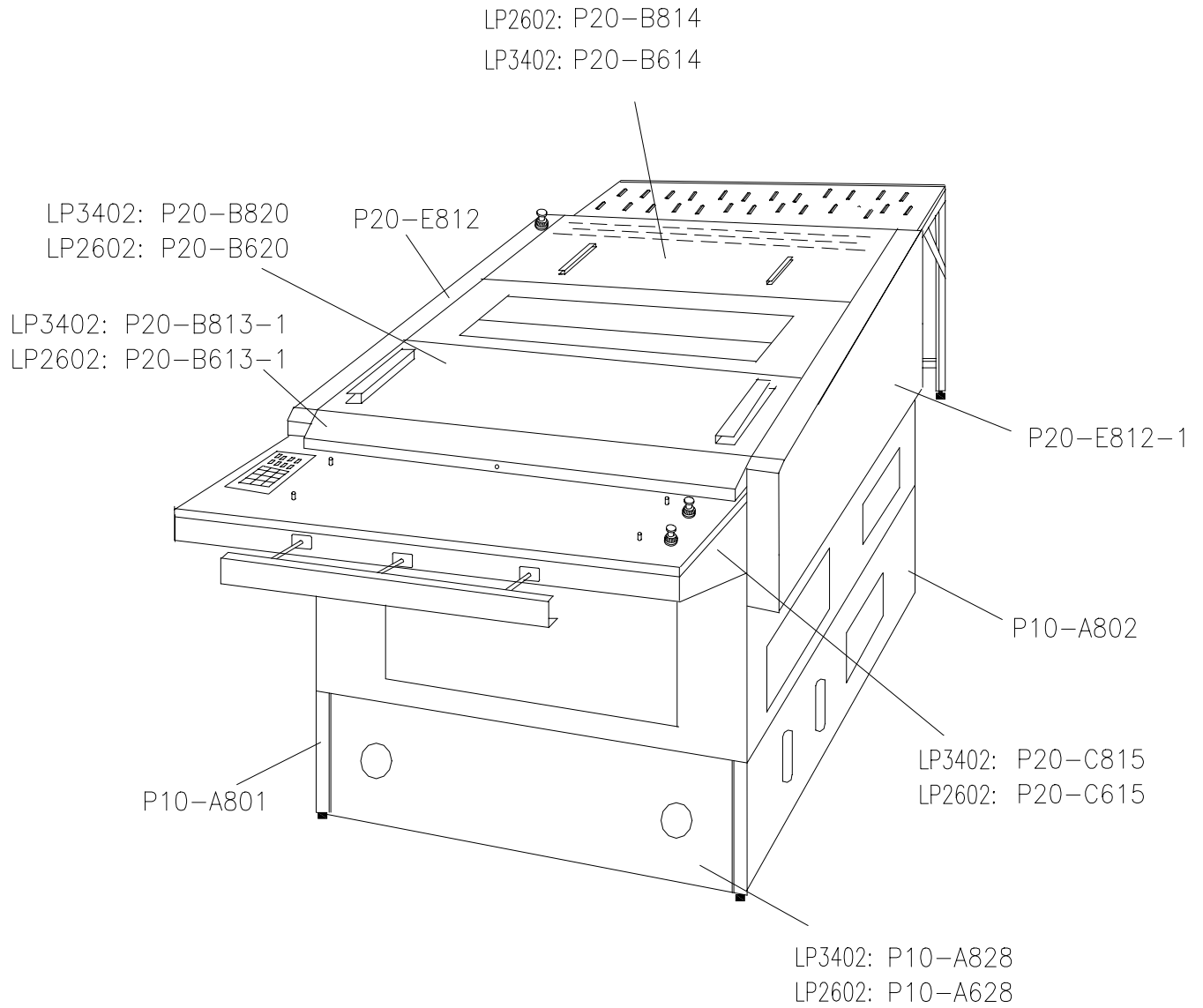
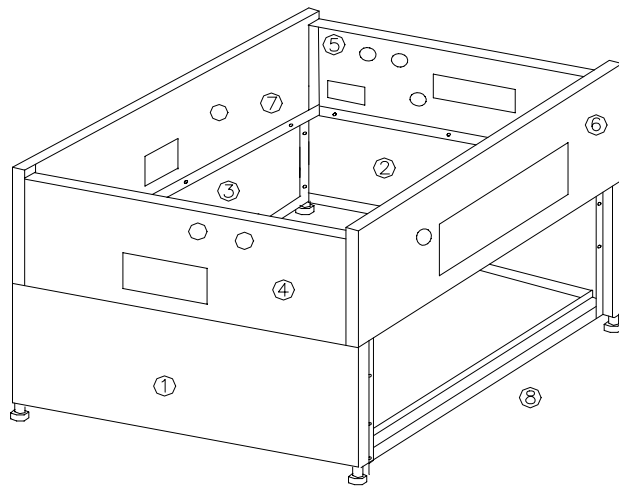


Figure 6-5. Cover



	LP3402	LP2602
①	P10-A801	P10-A801
②	P10-A802	P10-A802
③	P10-A803	P10-A603
④	P10-A822	P10-A822
⑤	P10-A823	P10-A823
⑥	P10-A824	P10-A824
⑦	P10-A825	P10-A625
⑧	P10-L801	P10-L601

Figure 6-6. Structure

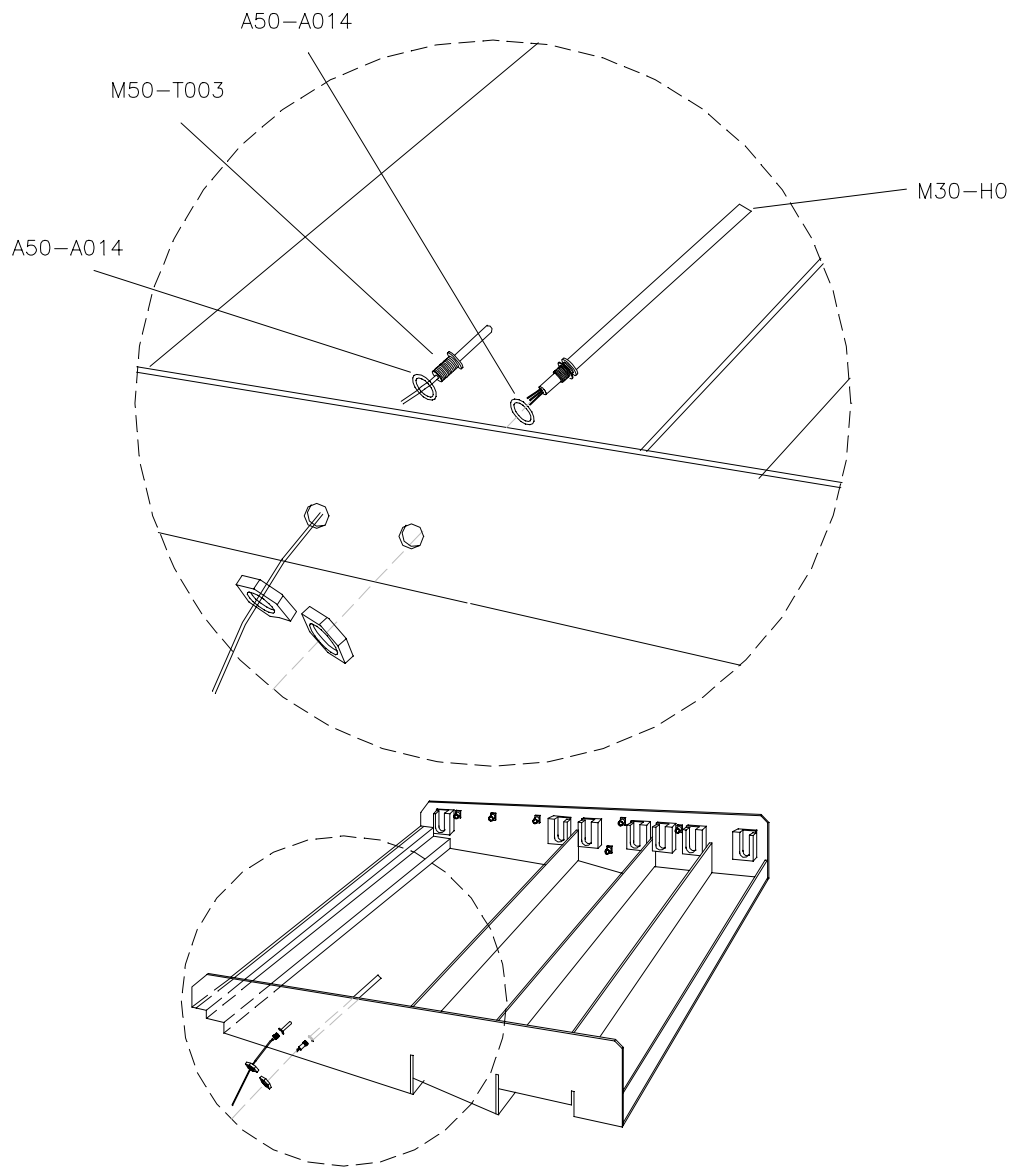


Figure 6-7. Developer Heater

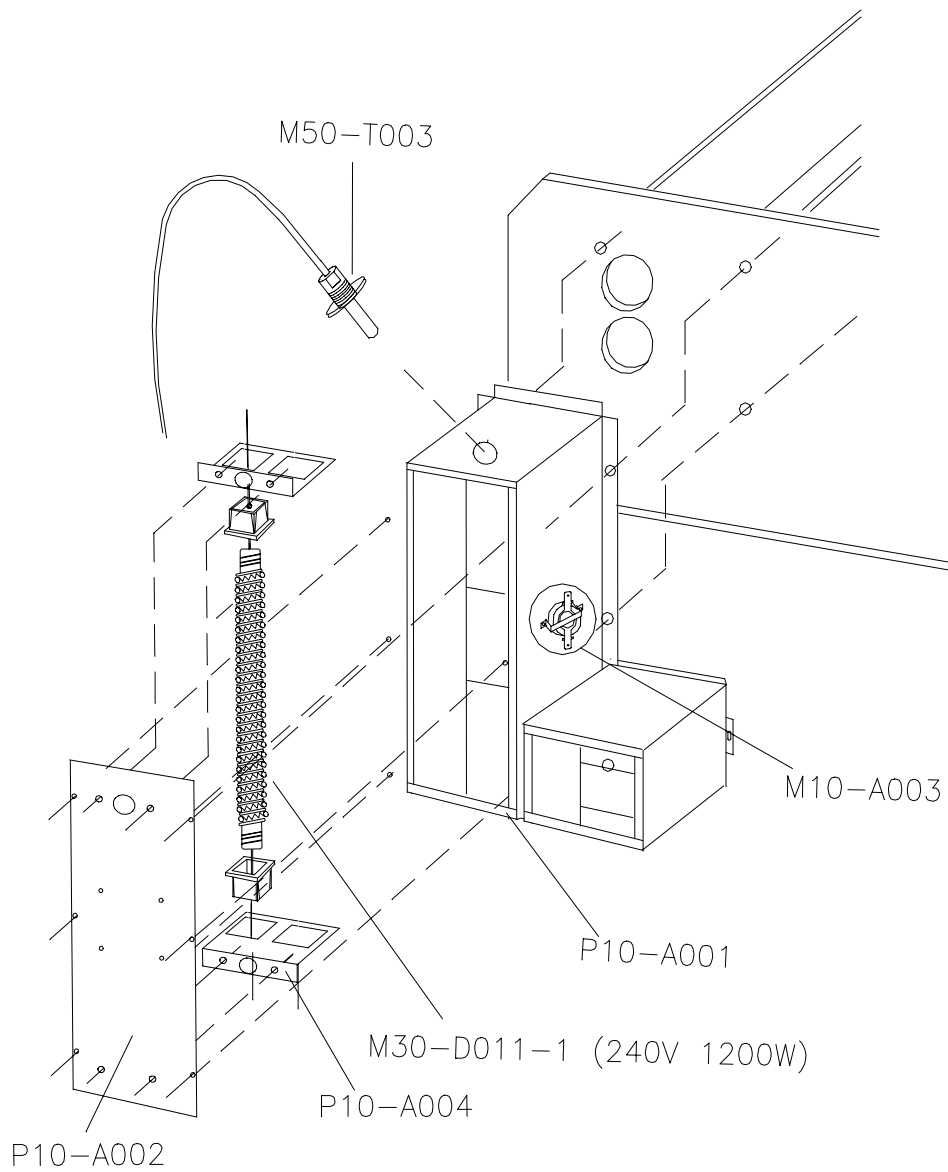
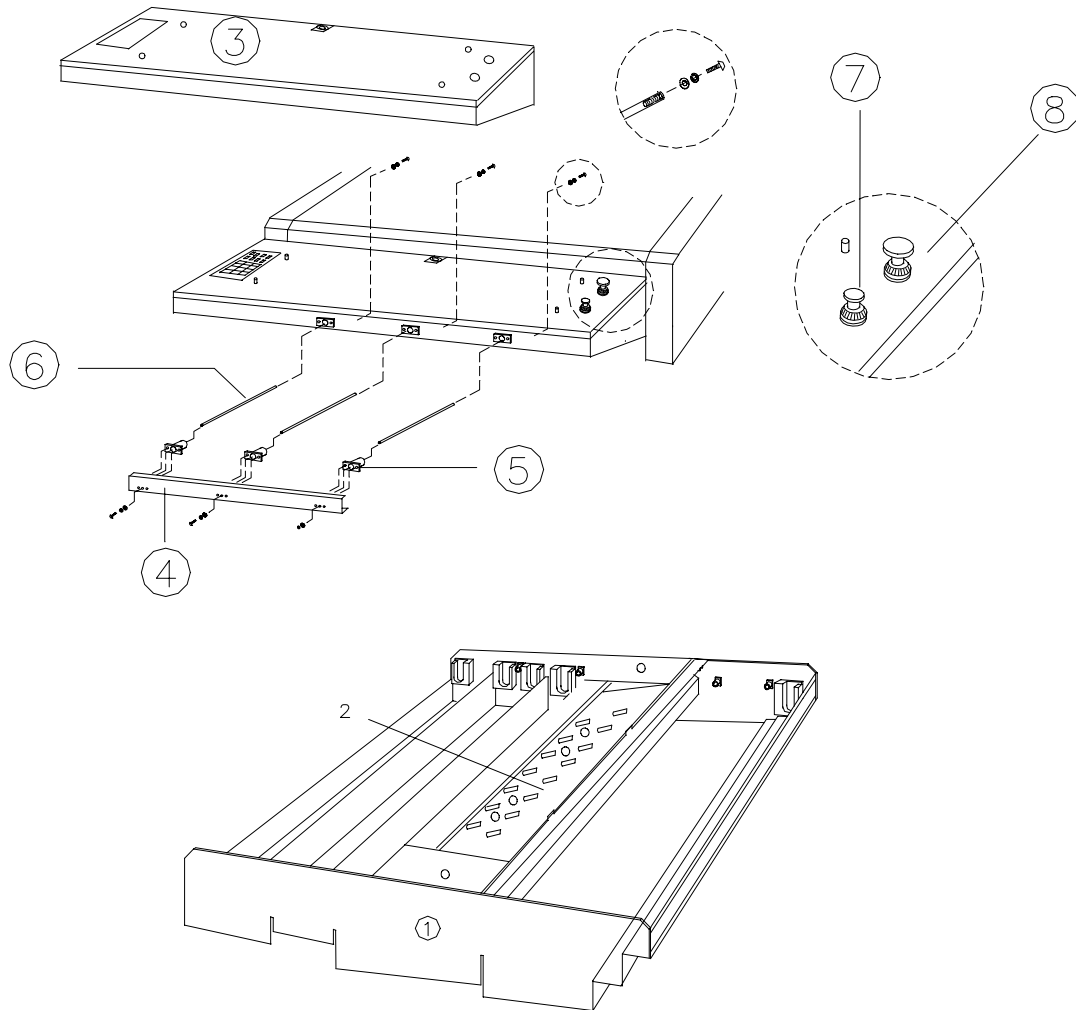


Figure 6-8. Dryer Heater



	LP3402	LP2602
①	P20-B821	P20-B621
②	P10-L812	P10-L612
③	P20-C815	P20-C615
④	P20-B815	P20-B615
⑤	P40-A008	P40-A008
⑥	P20-L001	P20-L001
⑦	M10-A006	M10-A006
⑧	M10-A012	M10-A012

Figure 6-9. Feed & Rewash

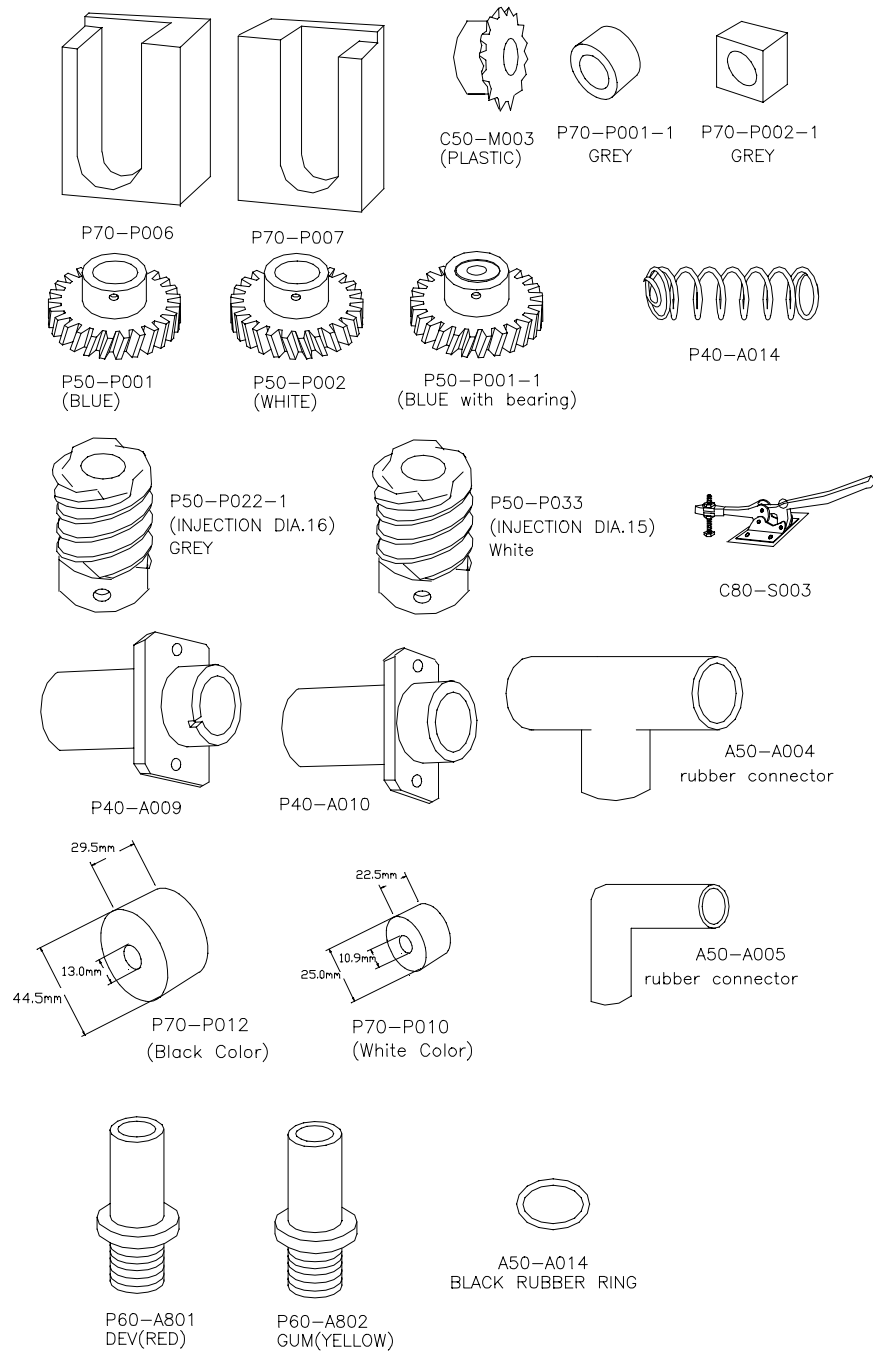


Figure 6-10. Gears & Plastic Parts

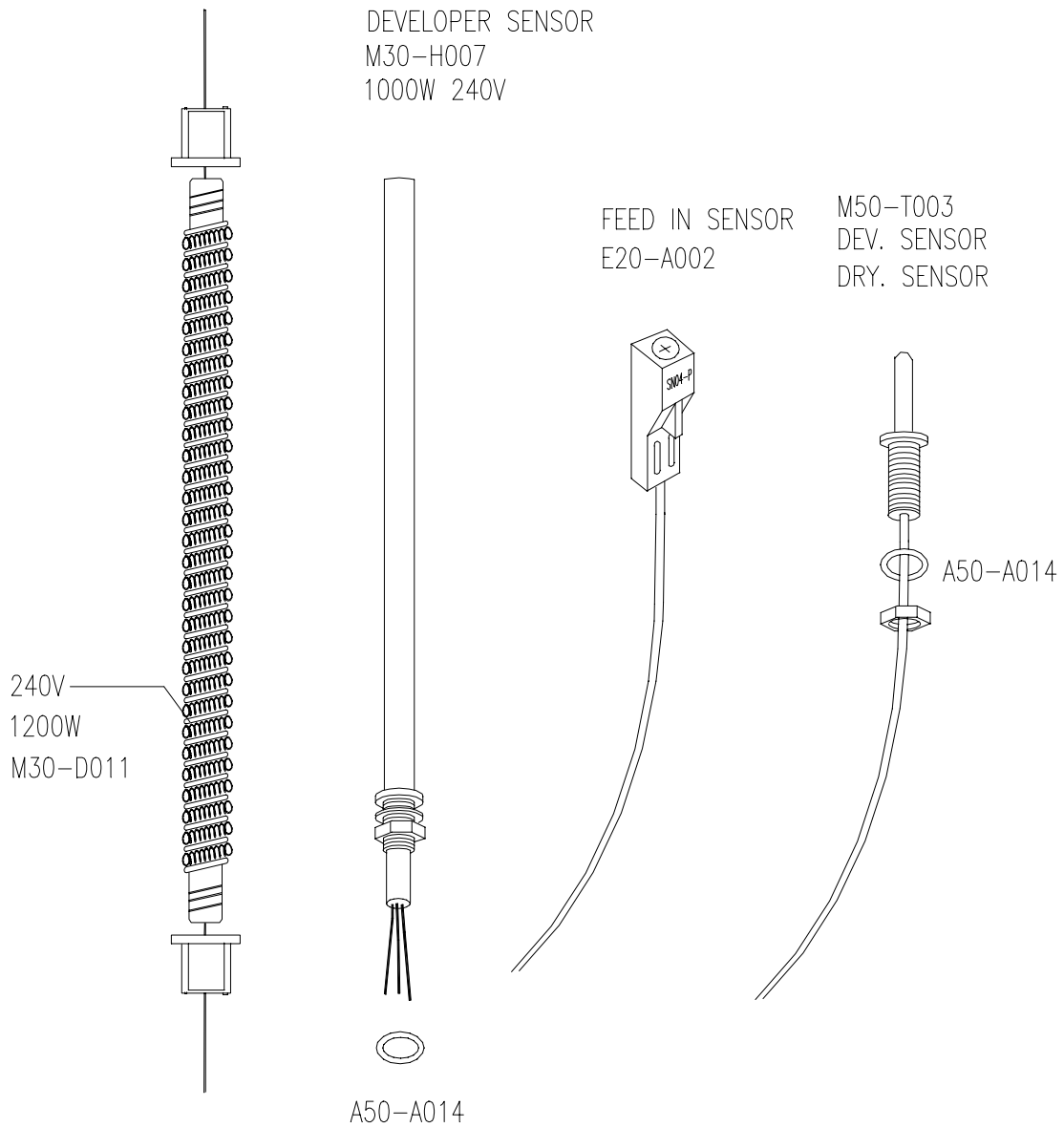


Figure 6-11. Heater & Sensor

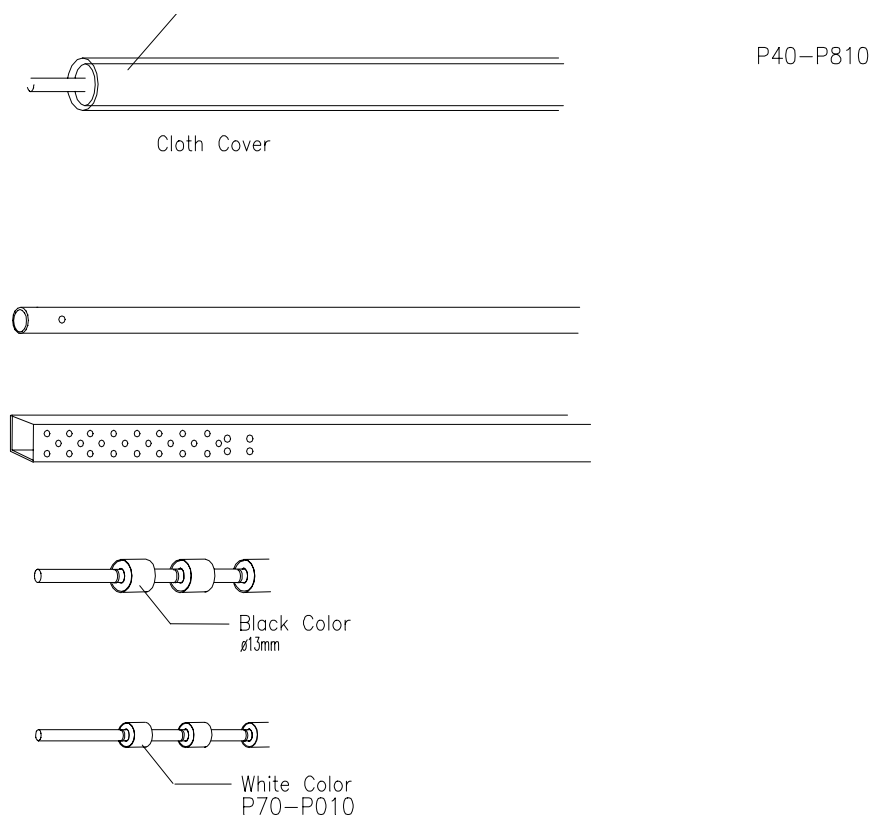


Figure 6-12. Rollers & Others

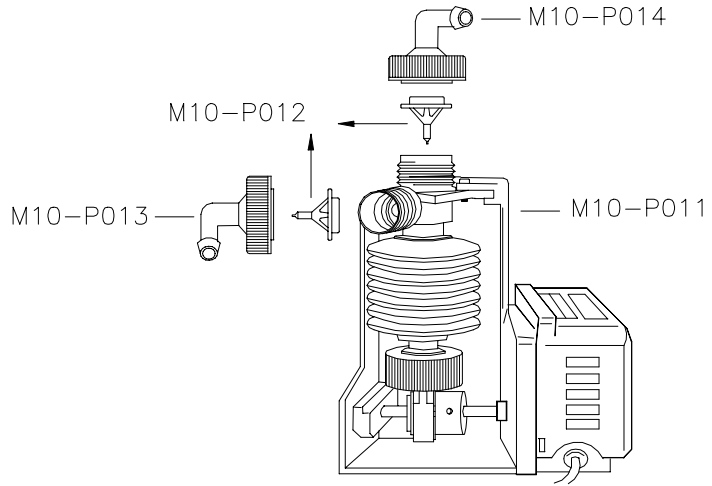


Figure 6-13. Replenisher

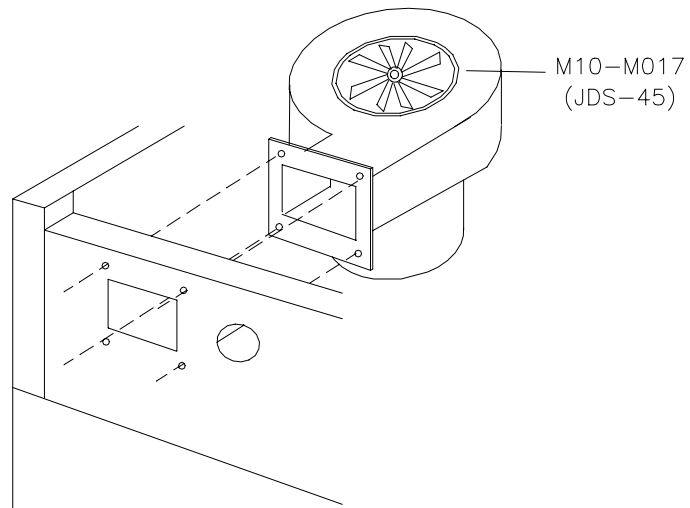


Figure 6-14. Fan

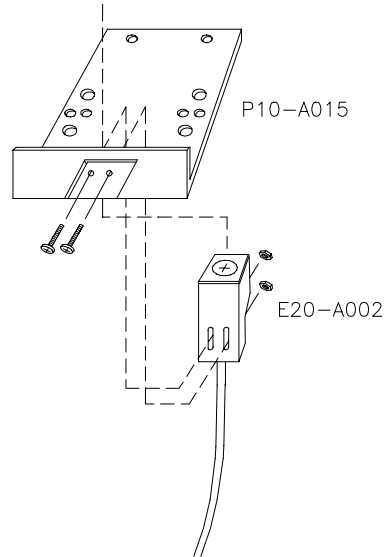


Figure 6-15. Feed Sensor

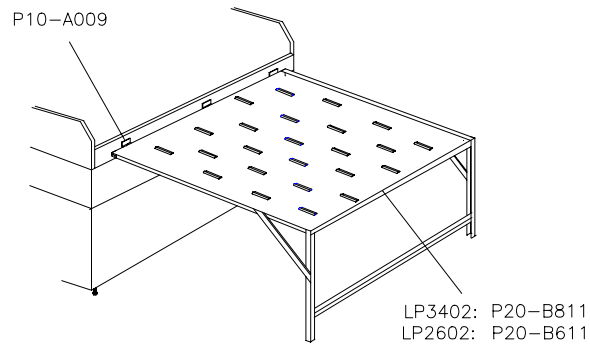


Figure 6-16. Receiving Table